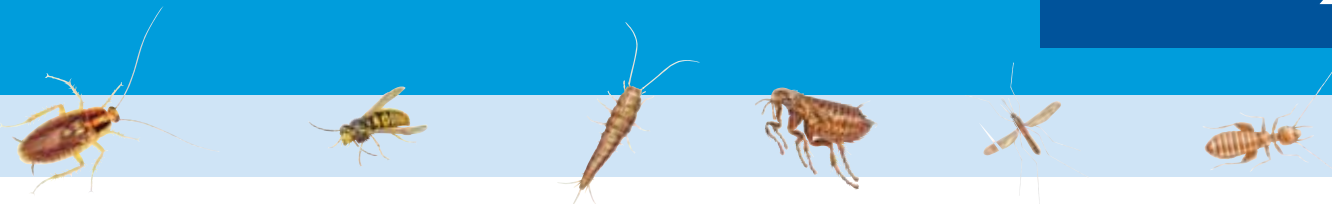




COOPEX[®]

Like water off a dusts back.



Coopex Insecticidal Dusting Powder is a ready to use broad spectrum insecticide for the control of a wide range of insect pests.

Coopex Insecticidal Dust contains permethrin 1% which provides fantastic control of insect pests by penetrating deep into inaccessible voids to give you long term protection.

The hydrophobic carrier used in Coopex will not absorb moisture so your dust will remain active for a longer period.

Moisture from the atmosphere or environment will clog up other dust formulations preventing the active ingredient from doing its job. Our unique hydrophobic carrier remains dry and fluffy and will never cake together.

Target pests

- Cockroaches
- Silverfish
- Spiders
- Bird Mites
- European Wasps
- Feral Honey Bees
- Hide Beetles
- Fleas
- Bed bugs
- Subterranean termites

Areas of use

Industrial areas, Domestic, Roof voids, Nests in trees.

Key features

- | | |
|---|---|
| <input checked="" type="checkbox"/> Hydrophobic carrier | <input checked="" type="checkbox"/> Effective at low concentrations |
| <input checked="" type="checkbox"/> Long Lasting Residual | <input checked="" type="checkbox"/> Synthetic pyrethroid product |
| <input checked="" type="checkbox"/> Highly stable | <input checked="" type="checkbox"/> Safe for use in wall and ceiling voids and electrical systems |
| <input checked="" type="checkbox"/> Ready to use product | <input checked="" type="checkbox"/> Does not absorb moisture from the atmosphere or environment |

Application rate and delivery

- 10g/m² applied with a powder duster to all voids and harbourages
- 125g to 250g per European Wasp nest (normally subterranean)
- 250g per tree for *Coptotermes* spp control

Comments on application

Blow powder into all cracks and crevices and voids where insect pests will harbour. For large void application such as roof and walls, the use of electric powered blowers is recommended. Electric blowers can create air currents into the void on which the dust will float, thus impacting a larger area and hence more exposure to insect pests.

For smaller voids such as cracks and crevices in furniture, behind fixtures (cupboards, etc), hollow tubing in frames, voids in window frames, etc, we recommend the use of a hand duster where control of the dust output is essential. The dust is highly visible so over-application is to be strictly avoided. Wipe up spills and overflow immediately. Use a cover towel to prevent dust falling onto food utensils or preparation benches.

This product is an essential component in the management of spiders. We recommend the use of electric blowers to drift dust into voids where spiders will harbour. The drifting dust will attach to webbing and provide an excellent control of this pest.

Bird mite infestation will involve the application of a liquid product such as Cislin 25 to internal areas. Voids in ceiling and walls can then be treated with Coopex Dust applied with an electric blower to cover all areas. Pay particular attention to areas where birds nests are established.

When treating European Wasps and Feral Honey Bees in wall cavities, it is essential to keep in mind that these are very aggressive pest species and will become very agitated when their nests are disturbed. Coopex Dust does not provide an instant kill of these insects so it is essential that you prepare to protect yourself and others during application and until the pest is destroyed. Dust bee colonies after dark to ensure maximum impact from your application.



Through market leading research and development, Bayer Environmental Science is committed to providing quality, highly effective and safe pest management solutions for Pest Management Professionals.

Best practice guidelines

- Conduct a thorough inspection prior to application
- Inspection should consider areas of potential drift and take steps to minimise any impact
- Spills and over application should be cleaned up immediately
- Keep the plastic carrier bag and the pail lid tightly closed when not in use
- Application equipment should be clearly labelled and in good serviceable order
- Stir the dust vigorously before filling application equipment and regularly agitate dust during application
- Always identify the pest and the stage of its life cycle and provide follow up service when prudent
- Apply a residual spray treatment such as Tempo or Cislin 25 to the external void entrance for long term control.



Product Profile

Active ingredient information:

1g/kg permethrin 25:75

Insecticide group: Synthetic pyrethroid

Formulation type: Dust

Pack sizes available: 10 kg plastic pail

Product safety

Will irritate eyes. Wear eye protection when using, handling or filling equipment. Do not inhale the dust. When handling the product wear rubber gloves and a disposable dust mask.

Dangerous to bees and reptiles. Avoid drift into sensitive non target areas. Dangerous to fish and other aquatic organisms. Do not contaminate waterways with this product.

No products produced by Bayer Environmental Science have been shown to be carcinogenic, teratogenic or mutagenic.

Regulatory information

APVMA Approval number: 33210/0103

AQIS IOA Status: 16 D

AQIS IOA Approval no.: 10906

Poisons Schedule: Exempt

Impact on the environment:

All pesticides are regulated under the Agricultural and Veterinary Chemicals Act to ensure that they do not pose an unacceptable risk to human health and the environment. For more information regarding the pesticide regulatory process please visit the Australian Pesticides and Veterinary Medicines Authority website at: www.apvma.gov.au

Bayer Environmental Science is committed to sustainable development



Bayer is a leader in sustainable development within the industry and has been included in the Dow Jones Sustainability World Index on a number of occasions and is the first European Chemical company to be listed in the Carbon Disclosure Leadership Index.

This information sheet has been printed on 85% recycled paper with an Aqueous Varnish and is 100% recyclable.



ALWAYS READ AND FOLLOW THE REGISTERED PRODUCT LABEL PRIOR TO USE.

Coopex Insecticidal Dusting Powder® is a Registered Trademark of Bayer.

Bayer Environmental Science
A Business Operation of Bayer CropScience
Bayer CropScience Pty Ltd
391-393 Tooronga Road
Hawthorn East Victoria 3123
Phone: 03 9248 6888
Technical enquiries: 1800 804 479
www.bayeres.com.au

Distributor Information