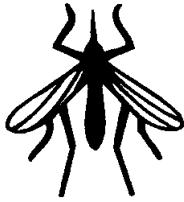


Wellmark

READ SAFETY DIRECTIONS BEFORE OPENING OR USING



# ProLink™ XR BRIQUETS

## MOSQUITO GROWTH REGULATOR

**ACTIVE CONSTITUENT: 18 g/kg (S)-METHOPRENE (dry weight basis)**

*(This product contains water, therefore the weight of the briquet and percent by weight of active constituent will vary with hydration.)*

**GROUP 7A INSECTICIDE**

**A SUSTAINED RELEASE PRODUCT TO  
PREVENT ADULT MOSQUITO EMERGENCE**

Distributed by: Pacific BioLogics Pty Ltd

35 Beach Street

Kippa Ring QLD 4021

(07) 3283 5077 (8:30 am to 5:30 pm E.S.T. Monday to Friday)

[www.pacificbiologics.com.au](http://www.pacificbiologics.com.au)

**Net Contents:**

3.66 Kg dry weight basis  
contains 100 briquets

MADE IN USA



## DIRECTIONS FOR USE:

Restraint: DO NOT use in areas grazed by livestock.

Site	Pest	Rate	Critical Comments
Dams, storm drains, catch basins, catch basins, roadside ditches, ornamental ponds and pools, cesspools and septic tanks, sewage treatment settling ponds, abandoned swimming pools, construction and other manmade depressions, ponds and pools in freshwater swamps and marshes, salt marshes, mangrove swamps, woodland pools and flood plains.	<i>Ochlerotatus vigilax</i>	1 briquet per 20 m <sup>2</sup>	Use this rate when water is shallow (<30 cm), clean and where larval mosquito counts are low (<10 per dip).
		1 briquet per 10 m <sup>2</sup>	Use this rate where water is deep (>30 cm) or is rich in organic matter or sediment, or where larval mosquito counts are high (>10 per dip).
	All other mosquito species	1 briquet per 10 m <sup>2</sup>	Use 1 briquet per 10 m <sup>2</sup> for all other mosquito species.
Rain water tanks (including those containing potable water)	All mosquito larvae	1 briquet per 5,000L of water	Retreat rainwater tanks at 6 month to yearly intervals.

**NOT TO BE USED FOR ANY PURPOSE, OR IN ANY MANNER, CONTRARY TO THIS LABEL UNLESS AUTHORISED UNDER APPROPRIATE LEGISLATION**

Users in NSW must comply with the Protection of the Environment Operations Act, 1997 and its subsequent amendments.

## GENERAL INSTRUCTIONS

ProLink™ XR BRIQUETS provide extended mosquito control in chronic, long-term breeding sites by preventing the emergence of adult mosquitoes, including common *Aedes*, *Anopheles*, *Culex* and *Ochlerotatus* spp. Treated larvae continue to develop normally to the pupal stage after which they fail to emerge. (S)-methoprene has no effect on mosquitoes which have reached the pupal or adult stage of development at time of treatment.

### Application:

ProLink XR BRIQUETS are designed to release (S)-methoprene over a period up to 150 days in submerged mosquito breeding sites. Soft mud and loose sediment can cover the briquets and inhibit normal dispersion of the active ingredient. In such sites briquets may be placed in mesh bags, tied to stakes, to prevent the briquet sinking into the substrate. This also enables easy monitoring of the rate of breakdown on the briquets. Similarly a briquet suspended in a mesh bag in a water tank can be checked at intervals.

ProLink XR BRIQUETS may not be effective in those situations where the briquets can be removed from the site by flushing action. Briquets should be anchored as described above.

ProLink XR BRIQUETS should be applied before or at the beginning of the mosquito control season. The briquets can be applied prior to flooding or rainfall when sites are dry. Briquets should be placed in the lowest areas of mosquito breeding sites to maintain continuous control as the site alternately floods and dries up. Under normal conditions, one application should last the entire mosquito control season, or at least 150 days, whichever is shorter. Alternate wetting and drying will not reduce the effectiveness of ProLink XR BRIQUETS.

Aerial application rates should be frequently checked by comparing amount of product used against area flown during application.

## Insecticide Resistance Warning

GROUP 7A INSECTICIDE

For insecticide resistance management, ProLink is a Group 7A insecticide. Some naturally occurring insect biotypes resistant to ProLink and other Group 7A insecticides may exist through normal genetic variability in any insect population. The resistant individuals can eventually dominate the insect population if ProLink or other Group 7A insecticides are used repeatedly. The effectiveness of ProLink on resistant individuals could be significantly reduced. Since occurrence of resistant individuals is difficult to detect prior to use, Wellmark International accepts no liability for any losses that may result from the failure of ProLink to control resistant insects.

## STORAGE AND DISPOSAL

Keep out of reach of children. Store in the closed, original container in a dry, cool, well-ventilated area out of direct sunlight. Triple or preferably pressure rinse container into the treated water. Do not dispose of undiluted chemicals on-site. Break, crush or puncture and bury empty containers in a local authority landfill. If no landfill is available bury the containers below 500 mm in a disposal pit specifically marked and set up for this purpose clear of waterways, vegetation and tree roots. Empty containers and product should not be burnt.

## SAFETY DIRECTIONS

Will irritate the eyes and skin. Avoid contact with eyes and skin. When using the product, wear elbow-length PVC gloves. If dust is present wear faceshield or goggles and disposable dust mask. If product in eyes, wash it out immediately with water. Wash hands after use. After each day's use, wash gloves and faceshield or goggles.

## FIRST AID

If poisoning occurs, contact a doctor or Poisons Information Centre (Phone: 131126)

## Material Safety Data Sheet

If additional hazard information is required refer to the Material Safety Data Sheet. For a copy phone your distributor.

## WARRANTY AND EXCLUSION OF LIABILITY

This product is warranted fit for the purposes specifically recommended by Wellmark International when used strictly as directed on this label. All other warranties and obligations for liabilities, whether expressed or implied by statute or otherwise, are excluded to the full extent that exclusion is permitted.

APVMA Approval No. 58061/100/0505

BATCH NUMBER:

EXPIRY DATE:

D.O.M.